



*1900 AMERICAN MAHOGANY*

**HERITAGE™**  
**PLUS**

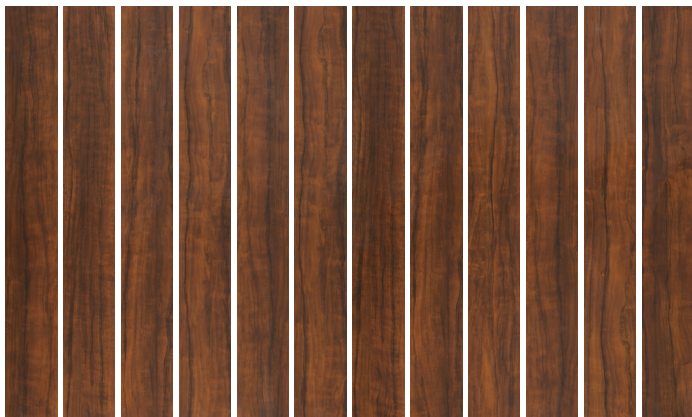
*Bringing Floors to Life...*

**Novelty™**  
**Laminate Flooring**

*Unilin • Crystal Finish • V-Groove With Paint*



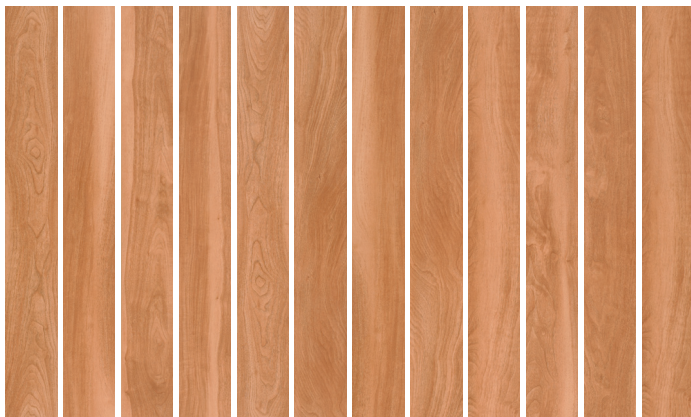
## 1228 TEAK WOOD



Ashlar



## 2000 NATURAL WALNUT

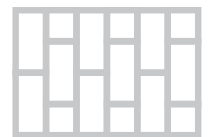
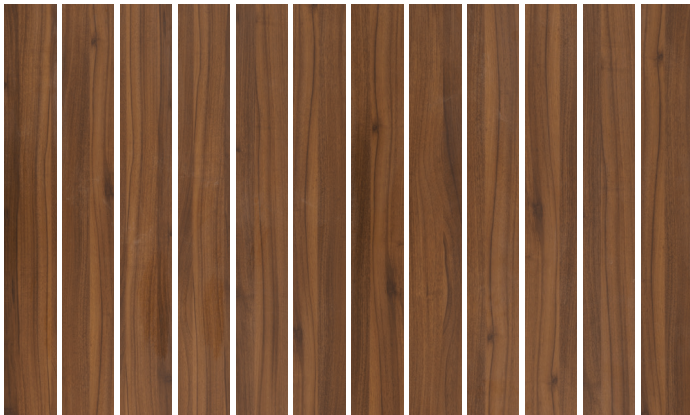


Ashlar

Kindly check stock availability with us before confirming the order. \*\*Plank pattern are packed randomly per box.



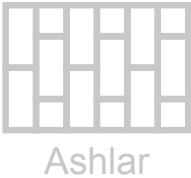
## 6400 NATURAL WOOD



Ashlar

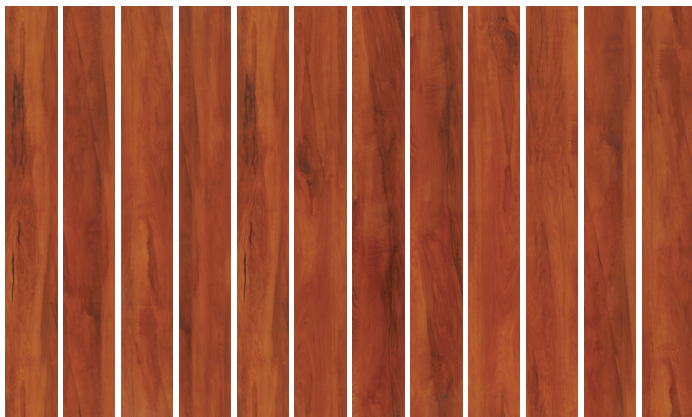


6479 ASPEN WOOD





## 1900 AMERICAN MAHOGANY



Ashlar

# How to clean and maintain Laminate floors

Cleaning and maintaining laminate floors is relatively easy and requires regular upkeep to keep them looking their best. Here's a step-by-step guide to help you clean and maintain your laminate floors:



1. Sweep or vacuum regularly: Use a soft-bristle broom or a vacuum cleaner with a brush attachment to remove loose dirt, dust, and debris from the surface of the laminate floor. This step helps prevent scratching during the cleaning process.
2. Wipe up spills immediately: Laminate floors are not waterproof, so it's crucial to clean up any spills or liquid accidents promptly. Use a soft, damp cloth or paper towel to blot the spill and prevent it from seeping into the seams or causing damage.
3. Use a microfiber mop or damp mop: To clean your laminate floors more thoroughly, you can use a microfiber mop or a mop dampened with water. Avoid using excessive amounts of water, as standing water can damage the laminate. Wring out the mop well before using it on the floor.
4. Use a gentle cleaning solution: For tougher stains or general cleaning, you can use a mild cleaning solution specifically formulated for laminate floors. You can either purchase a laminate floor cleaner from a store or make your own solution by mixing a small amount of mild dish soap with warm water. Avoid using harsh chemicals, abrasive cleaners, or wax-based products, as they can damage the laminate surface.
5. Spot clean stubborn stains: For stubborn stains that don't come off with regular cleaning, apply a small amount of the cleaning solution directly to the stain and let it sit for a few minutes. Gently scrub the stain using a soft-bristle brush or sponge, and then wipe it clean with a damp cloth.
6. Dry the floor thoroughly: After cleaning, make sure to dry the laminate floor thoroughly to prevent moisture from seeping into the seams or causing warping. Use a clean, dry microfiber cloth or towel to wipe away any excess moisture.
7. Avoid excessive moisture: Laminate floors are sensitive to moisture, so it's important to minimize their exposure to water. Avoid wet mopping or steam cleaning, and be cautious when using a humidifier in the same area. If you need to clean a larger area or want to steam clean, consider using a specialized laminate floor steam mop designed to minimize moisture.
8. Protect the floor from scratches: To prevent scratches, use furniture pads or felt protectors under the legs of your furniture. Additionally, avoid dragging heavy furniture across the laminate floor. Use caution when wearing high heels or sports cleats on laminate surfaces, as they can also cause scratches.
9. Remove dirt and grit regularly: Place doormats or rugs at entryways to trap dirt, sand, and grit before they reach the laminate floor. Regularly shake out or vacuum these mats to prevent the trapped particles from scratching the laminate.
10. Avoid abrasive tools: When cleaning or maintaining laminate floors, avoid using abrasive tools such as steel wool or abrasive scrub brushes, as they can scratch and damage the surface.

By following these steps, you can effectively clean and maintain your laminate floors, keeping them looking beautiful for years to come. Remember to always check the manufacturer's guidelines for specific care instructions, as they may provide additional recommendations or precautions for your particular laminate flooring.



1228 TEAK WOOD



1900 AMERICAN MAHOGANY



2000 NATURAL WALNUT



6400 NATURAL WOOD



6479 ASPEN WOOD

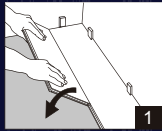
## Novelty Specifications

Dimensions (L x W x T)	1215 mm x 145 mm x 8 mm
Surface Finish	Crystal Finish, V-Groove with paint
Texture	Wood Visual
Core Material	Brown
Click	Unilin
Edge Detail	V-Groove
Quantity per box in sqm/sqft	12 pieces (2.114sqm/22.755 sqft)
Carton dimensions	1235 mm x 165 mm x 106 mm
Net Weight per sqm	15.05 kg/m <sup>2</sup>

## Performance

Bending Strength	≥ 44, ≤ 42.6 MPa
Moisture Content	6.50%
Density	≥ 0.96 g/cm <sup>3</sup>
Thickness Swelling	≤ 6%
Resistance to High and Low Temperature	No Fissure and Blister
Abrasion Resistance	AC4-32 Class
Internal Binding Force	≥ 1.3, ≥ 1.1 MPa
Surface Binding Force	≥ 1.2, ≥ 1.1 MPa
Resistance to Mark	Pass
Resistance to Cigarette	Pass
Impact Resistance	10 mm
Formaldehyde Release	0.4 mg/L
Surface Resistance to Staining	Pass
Surface Resistance Steam	Pass

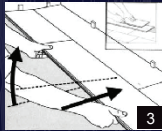
Our patented mechanical locking system makes professional quality installation as easy as:



**LIFT**  
Insert Plank  
Into Channel



**LOCK**  
Insert Long Edge of  
Second Plank into Channel



**DROP**  
Press Second Plank  
Forward and Fold Down



EN13329-32



Ashlar



Brick

