

VIEW ON WEBSITE



SCAN HERE ↑



Elegance & Comfort in Modern Living

# TOPAZ 12

CARPET TILES



Ashlar

1202 PATH GREEN

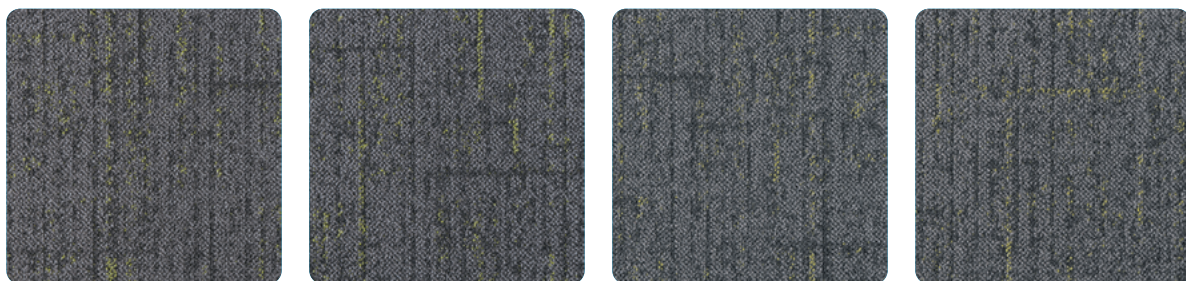
# TOPAZ 12

## SWATCHES

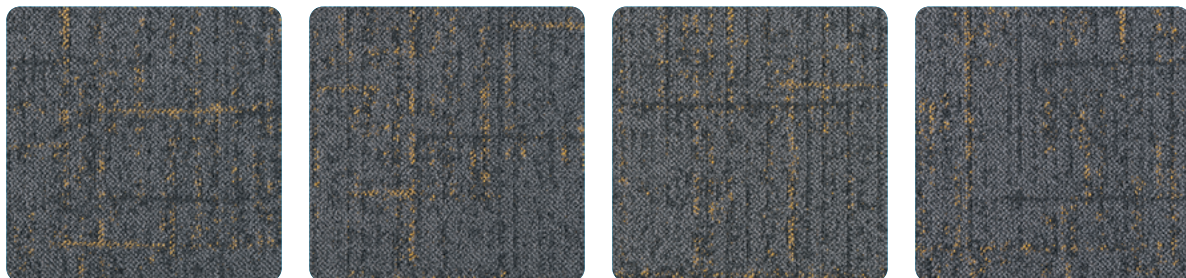
**1201 TRAIL GREY**



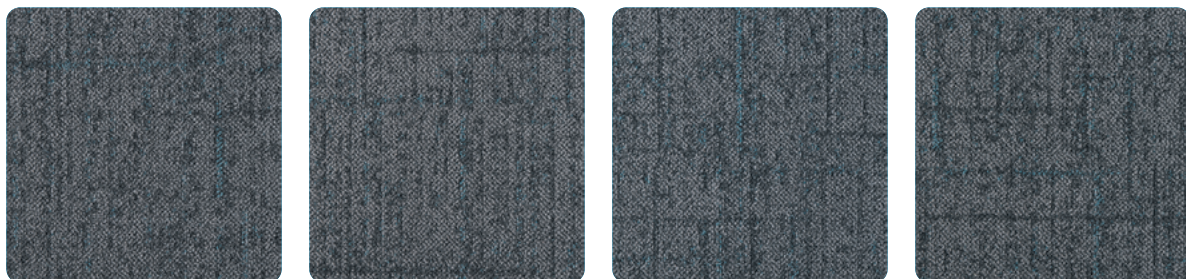
**1202 PATH GREEN**



**1203 FLAME GOLD**



**1210 SPLENDID BLUE**





1203 FLAME GOLD

Ashlar



1201 TRAIL GREY

Brick



## TOPAZ 12 Specifications

Construction	1/12" Multi-Level Loop Pattern
Yarn Composition	100% Solution Dyed Nylon
Tufted Pile Weight	Ca. 678 g/m <sup>2</sup> (20 oz/yd <sup>2</sup> ) (+/- 10%)
Total Weight	Ca. 3700 g/m <sup>2</sup> (112 oz/yd <sup>2</sup> ) (+/- 15%)
Pile Height	Ca. 4.5 mm (+/- 0.5 mm)
Total Height	Ca. 7.5 mm (+/- 0.5 mm)
Density (APYD)	4,064 ozs/yd <sup>3</sup>
Tuft Density	223,200 stitches/m <sup>2</sup>
Stitch Rate	47.2 per 10 cm
Backing	ECO Back - "PVC Free"
Tile Size	50 cm x 50 cm
Packing	20 pcs per box (5 m <sup>2</sup> )

## Performance

(as tested by ITTS Inc. USA)

Stain Resistance	9 (AATCC-175-2003)
Static Control	Pass - Max. 4 kV (AATCC 134-1996)
Tuft Bind	Pass - 6.8 lbs (ASTM-D-1335)
Dimensional Stability	Pass - Max. 2% change (AACHEN)
Indoor Air Quality (V.O.C.)	Pass - No VOC Detected (ASTM-D5116-10)
Impact Sound Insulation	ΔLw: 28 dB (ISO 10140)
Sound Absorption	α <sub>w</sub> = 0,25 (H) (ISO 354) Hz 125 250 500 1000 2000 4000 α <sub>s</sub> 0.00 0.05 0.30 0.20 0.20 0.25
Flammability	
- Radiant Panel	Pass - Class I (ASTM-E-648-06)
- Pill Test	Pass - 8 (ASTM-D-2859-96)
Colourfastness	
- to light	Excellent - 5 (AATCC-16E)
- to wet & dry crocking	Excellent - 5 (AATCC-16S)
- to ozone	3 (AATCC-129)

## Warranties

- 15 Year Carpet Wear Warranty
- Lifetime Anti-shock Carpet Warranty
- Ideal for Heavy Commercial Use.

The subfloor should be dry, smooth, flat, dust-free and resistant to compression and load-bearing. The seams may remain visible to the eye and this should be accepted as an inherent characteristic of carpet tiles. Due to dye lot variations, actual colour may vary slightly from the samples. Chair pads are recommended to prevent premature wear of carpet.

## Environment

The design and production of Topaz 12 Tile conforms to the ISO 14001:2004 Environmental Management System and complies with environmental regulations.

As a responsible manufacturer and to minimize our carbon footprint, a majority of our excess production materials are recycled in-house resulting in a minimum of 10% recycled content in our tile backing. Topaz 12 Tile does not contain any PVC in its manufactured materials and packaging.

Topaz 12 Tile is an environmentally friendly "green" carpet.

## Installation Method



Brick



Ashlar



Monolithic



Brick

1210 SPLENDID BLUE



Anti-slip



Passed Various Tests



Comfortable



ISO9001:2000



RECYCLED

**TOPAZ12**  
CARPET TILE