

MANDATE 13

CARPET TILES

HERITAGE™
CARPETS

Elegance & Comfort in Modern Living



1301 MATRIX GREY
1308 LUMINOUS ROSE

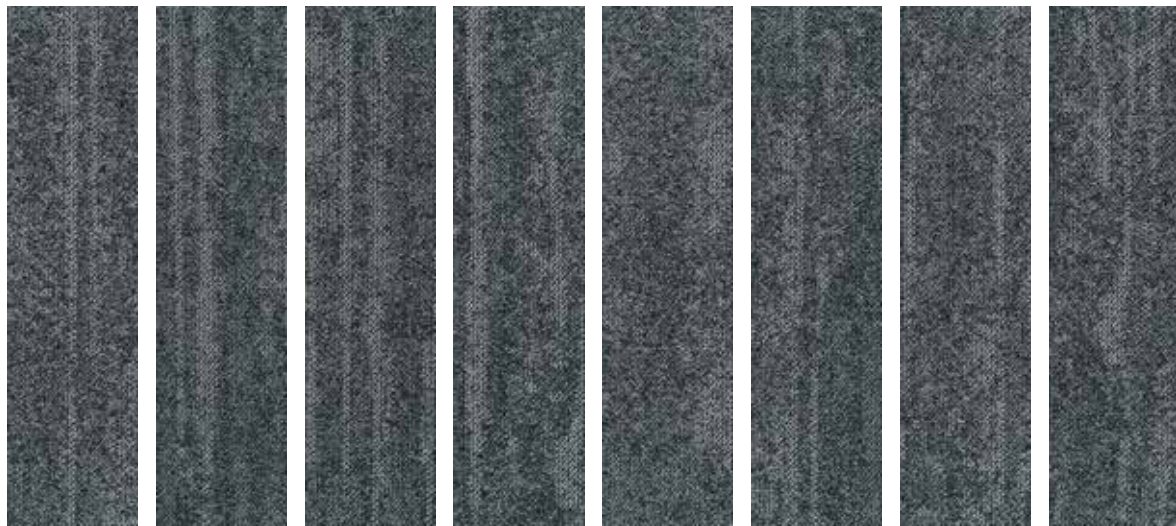




1301 MATRIX GREY
1302 WALTZ BLUE



1301 MATRIX GREY



1301 MATRIX GREY



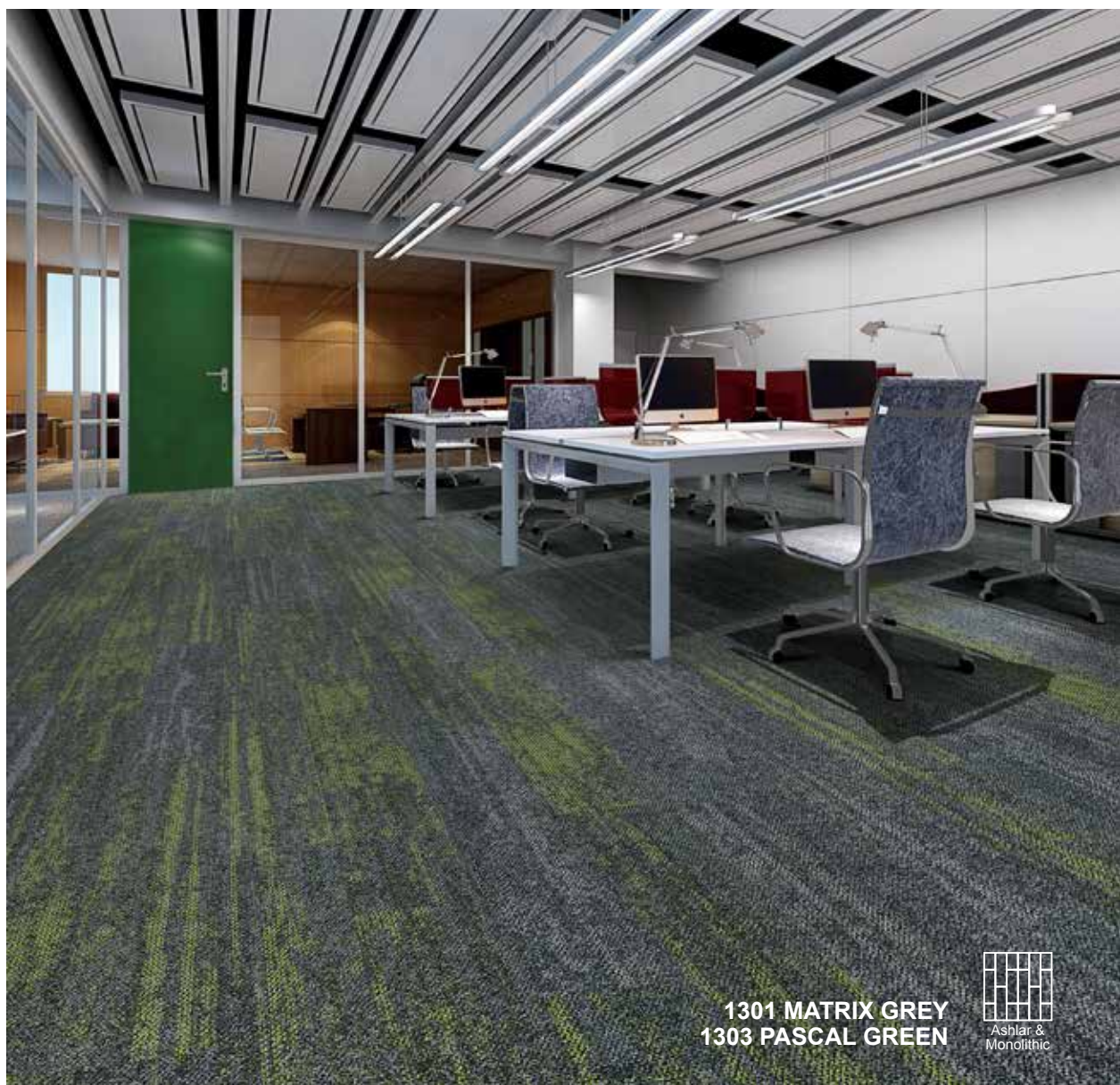
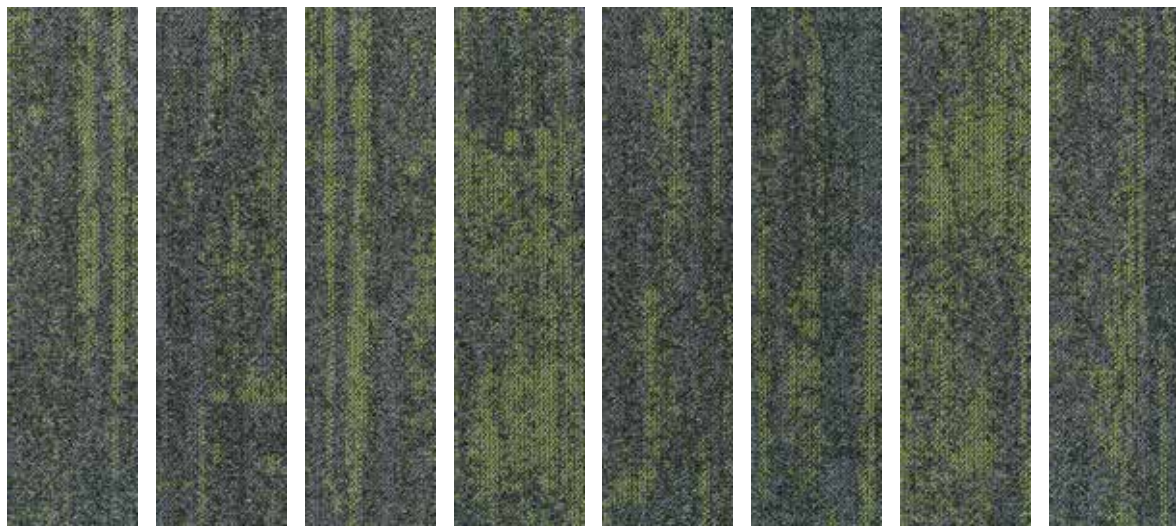
**Carpet Tile are packed randomly (20pcs per box), same pattern may occurred in the box. Kindly check stock availability with us before confirming the order.*

1302 WALTZ BLUE



1301 MATRIX GREY
1302 WALTZ BLUE

1303 PASCAL GREEN

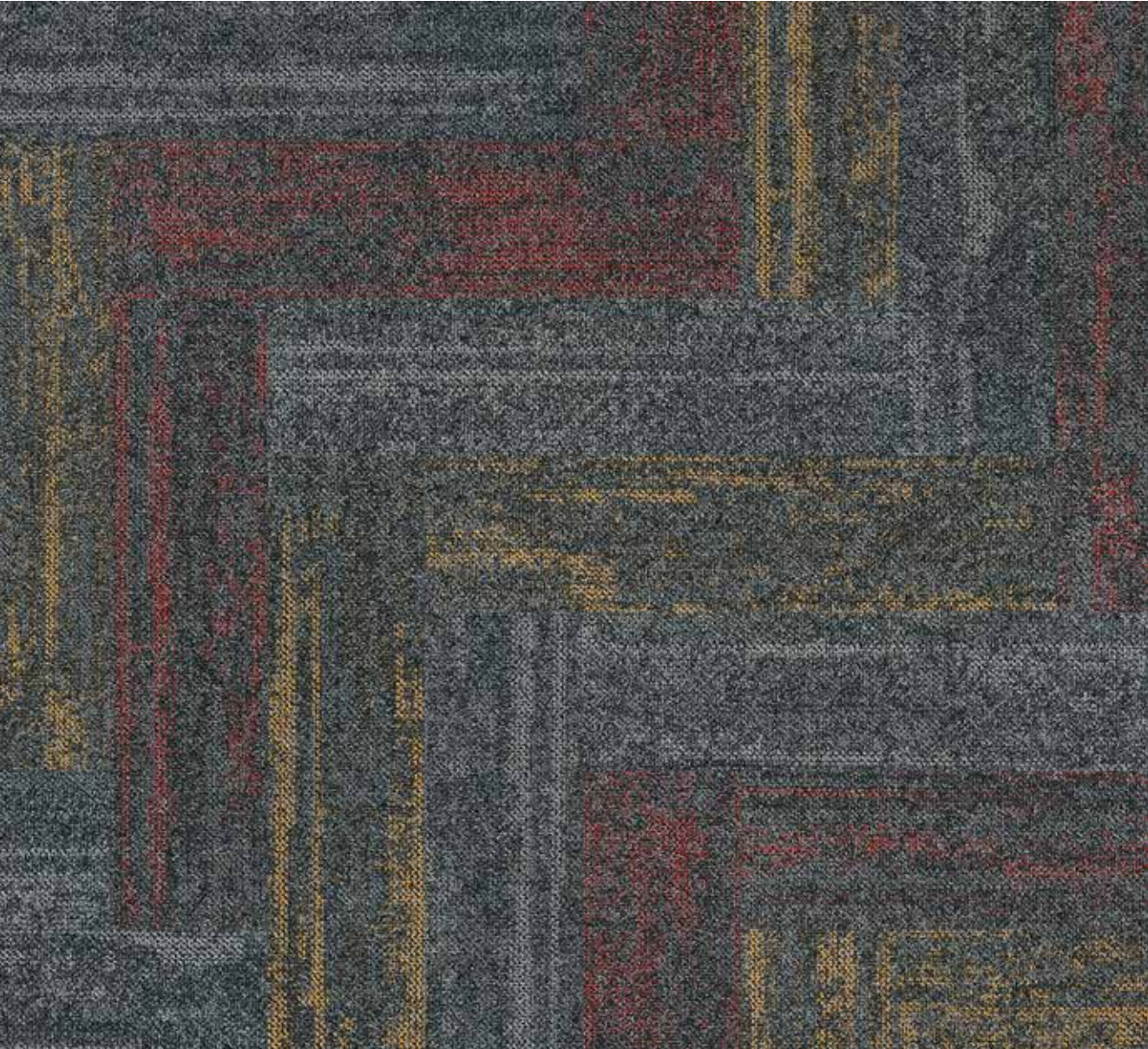
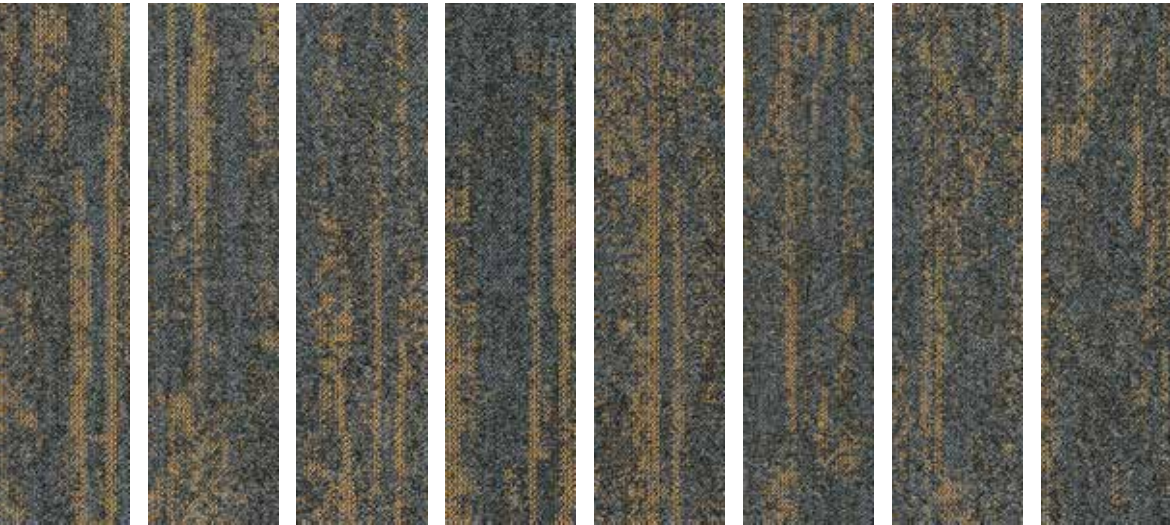


1301 MATRIX GREY
1303 PASCAL GREEN

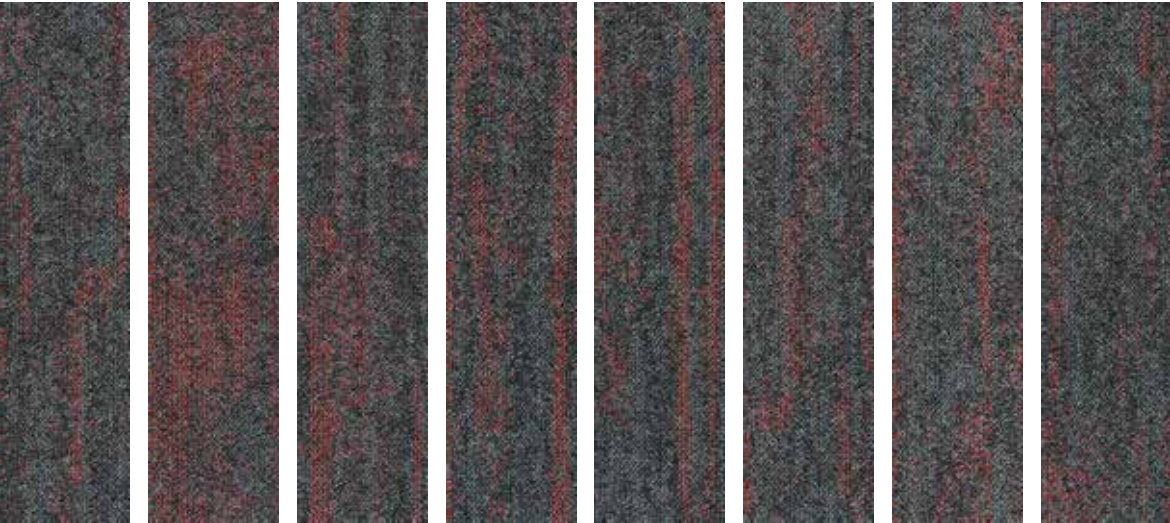


**Carpet Tile are packed randomly (20pcs per box), same pattern may occurred in the box. Kindly check stock availability with us before confirming the order.*

1305 TRAD BEIGE



1303 PASCAL GREEN



1301 MATRIX GREY
1305 TRAD BEIGE
1308 LUMINOUS ROSE



**Carpet Tile are packed randomly (20pcs per box), same pattern may occurred in the box. Kindly check stock availability with us before confirming the order.*



MANDATE 13 Specifications

Construction	1/12" Multi-Level Loop Graphic
Yarn Composition	100% Solution Dyed Olefin
Tufted Pile Weight	Ca. 678 g/m ² (20 oz/yd ²) (+/- 10%)
Total Weight	Ca. 3670 g/m ² (108 oz/yd ²) +/- 200 g/m ²
Pile Height	Ca. 4 mm (+/- 0.5 mm)
Total Height	Ca. 6 mm (+/- 0.5 mm)
Backing	ECO Back - "PVC Free"
Plank Size	25 cm x 100 cm
Packing	20 pcs per box (5 m ²)

Performance (as tested by ITTS Inc. USA)

Stain Resistance	9 (AATCC-175-2003)
Static Control	Pass - Max. 4 kV (AATCC-134-1996)
Tuft Bind	Pass - 8 lbs (ASTM-D-1335)
Dimensional Stability	Pass - Max. 0.1% change (AACHEN)
Indoor Air Quality (V.O.C.)	Pass - No VOC Detected (ASTM-D5116-10)
Impact Noise Rating	ΔL: 26 dB (ISO 10140)
Sound Absorption	αw 0.20 (ISO 354) Hz 125 250 500 1000 2000 4000 αs 0.01 0.03 0.08 0.28 0.35 0.43
Flammability	
- Radiant Panel	Pass - Class II (ASTM-E-648-06)
- Pill Test	Pass - 8 (ASTM-D-2859-06)
- Smoke Density	Pass - Max. 450 (ASTM-E-662-06)
Colourfastness	
- to light	Excellent - 5 (AATCC-16E)
- to wet & dry crocking	Excellent - 5 (AATCC-165)
- to ozone	Excellent - 5 (AATCC-129)

Warranties

10 Year Carpet Wear Warranty
Lifetime Anti-shock Carpet Warranty
Ideal for Medium Contract Use.

The subfloor should be dry, smooth, flat, dust-free and resistant to compression and load-bearing. Where seaming is necessary, a seam sealant must be used for all such installations. Due to dye lot variations, actual color may vary slightly from the samples. Chair pads are recommended to prevent premature wear of carpet.

Environment

The design and production of Mandate 13 Tile conforms to the ISO 14001:2004 Environmental Management System and complies with environmental regulations.

As a responsible manufacturer and to minimize our carbon footprint, a majority of our excess production materials are recycled in-house resulting in a minimum of 10% recycled content in our tile backing. Mandate 13 Tile does not contain any PVC in its manufactured materials and packaging.

Mandate 13 Tile is an environmentally friendly "green" carpet.

Installation Method



Ashlar & Monolithic



Ashlar



Brick



Herringbone



MANDATE 13
CARPET TILE