

TOPAZ 7

CARPET TILES



Elegance & Comfort in Modern Living



7701 SKY GREY
7702 APPLE GREY





7711 DESERT BEIGE
7712 CHROME BEIGE





7711 DESERT BEIGE



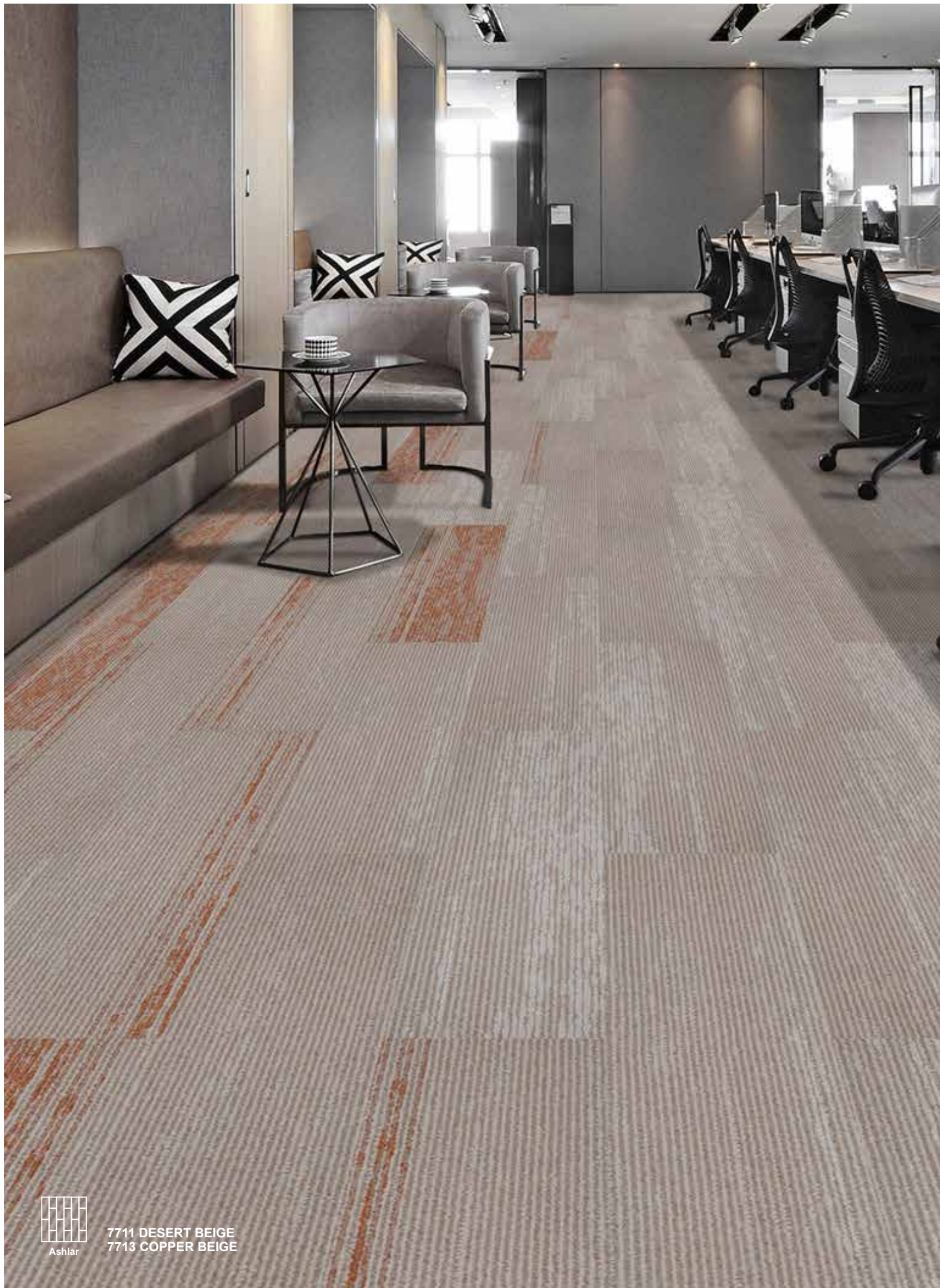
Herringbone



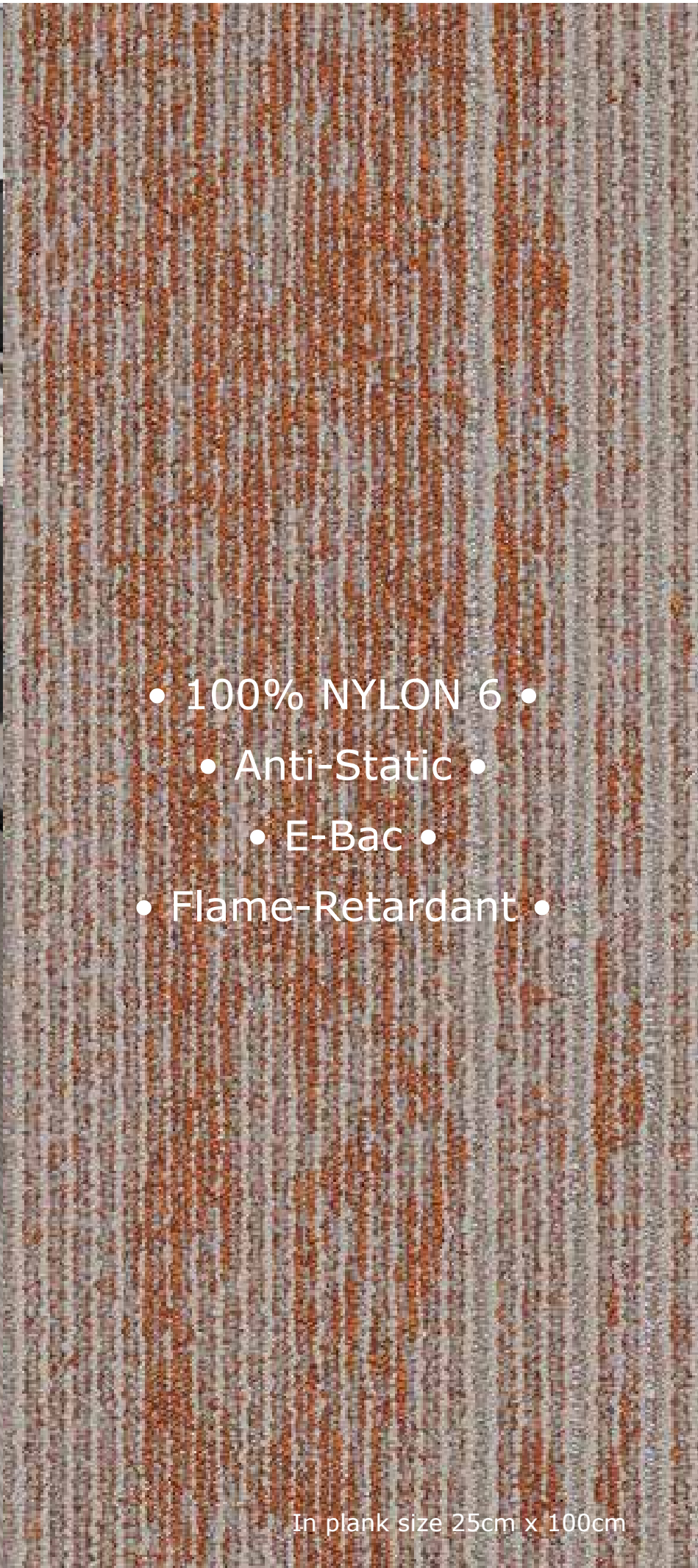
7701 SKY GREY
7703 COBALT GREY

Herringbone



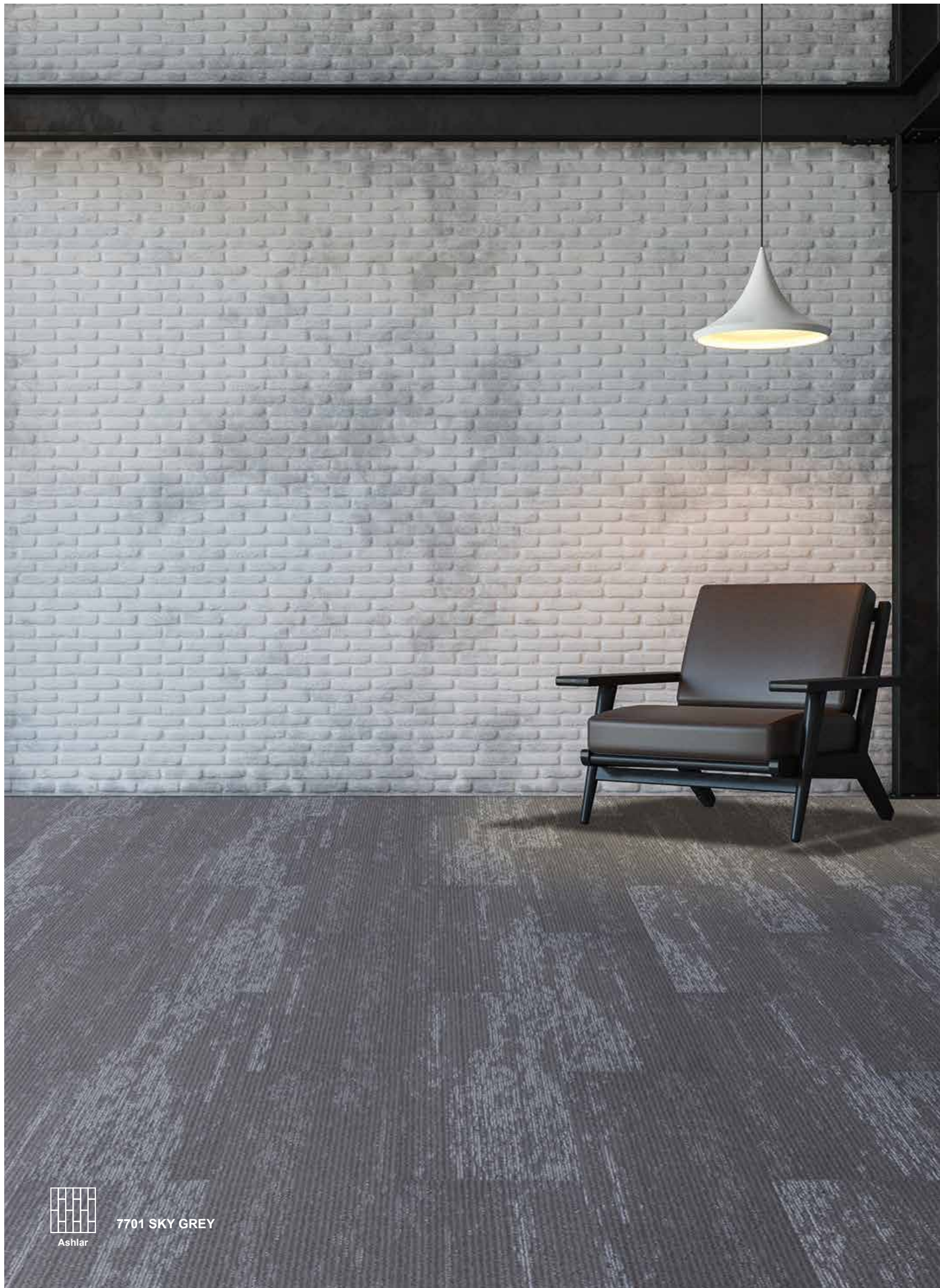


7711 DESERT BEIGE
7713 COPPER BEIGE



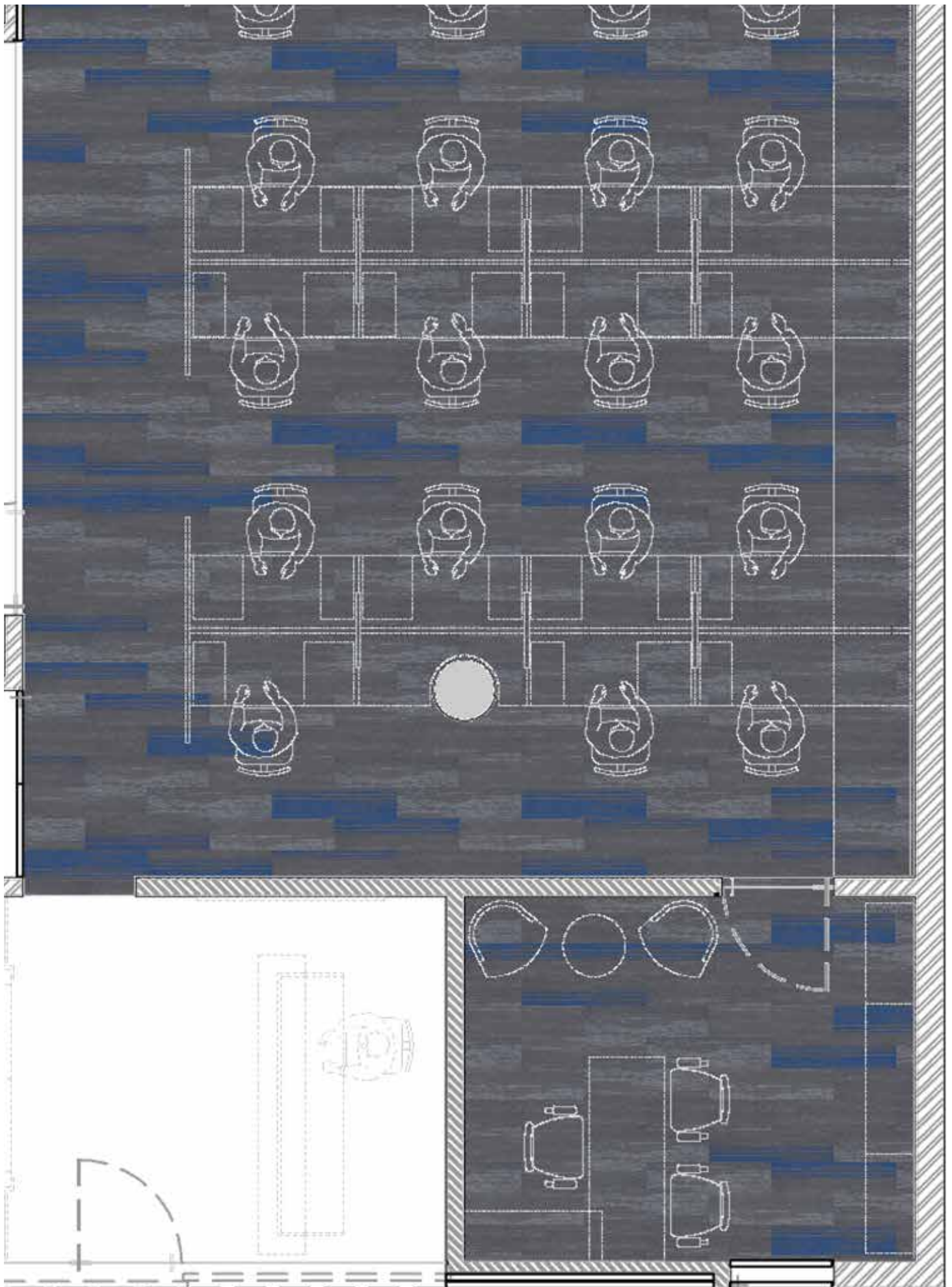
- 100% NYLON 6 •
- Anti-Static •
- E-Bac •
- Flame-Retardant •

In plank size 25cm x 100cm

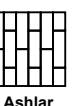


Ashlar

7701 SKY GREY



7701 SKY GREY
7703 COBALT GREY



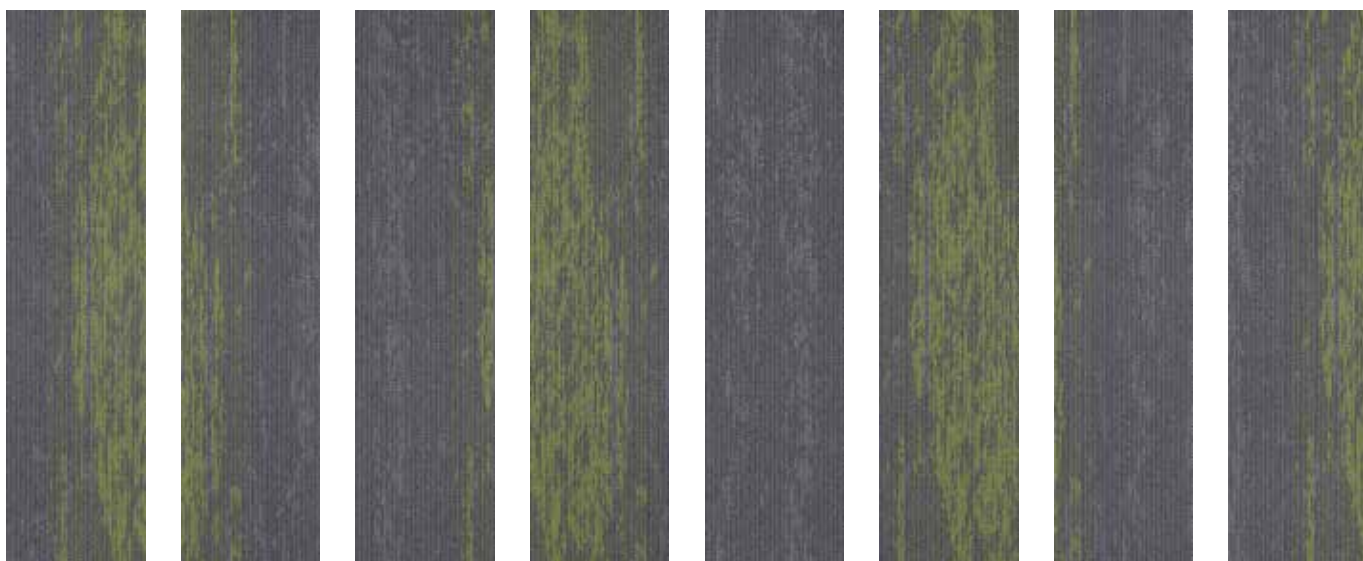
TOPAZ 7

SWATCHES

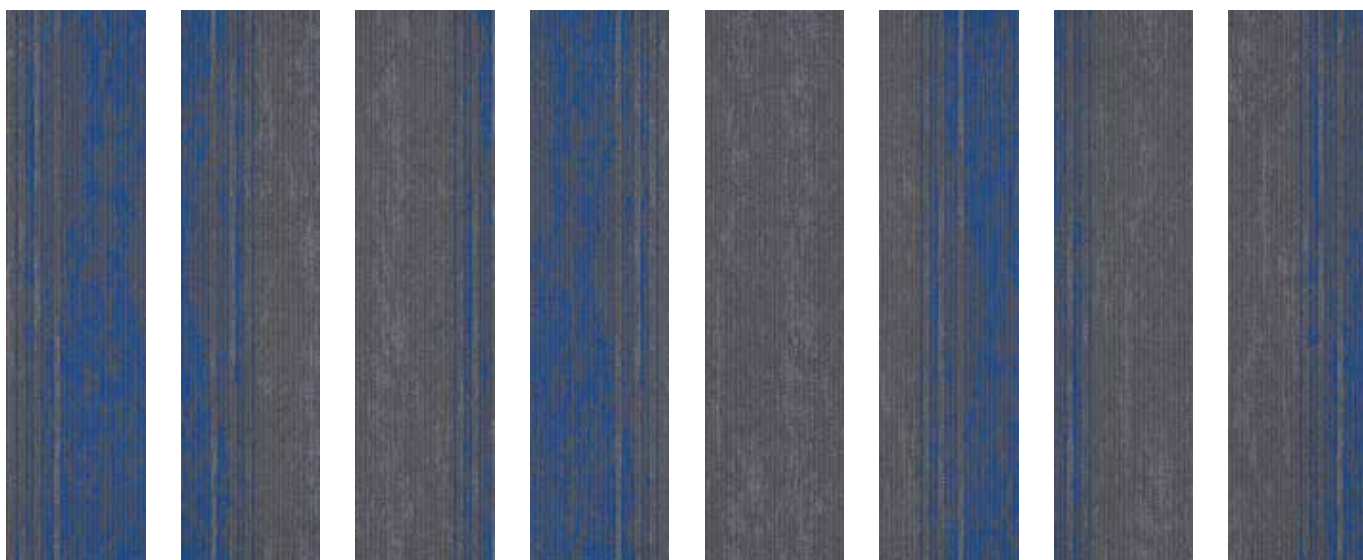
7701 SKY GREY



7702 APPLE GREY



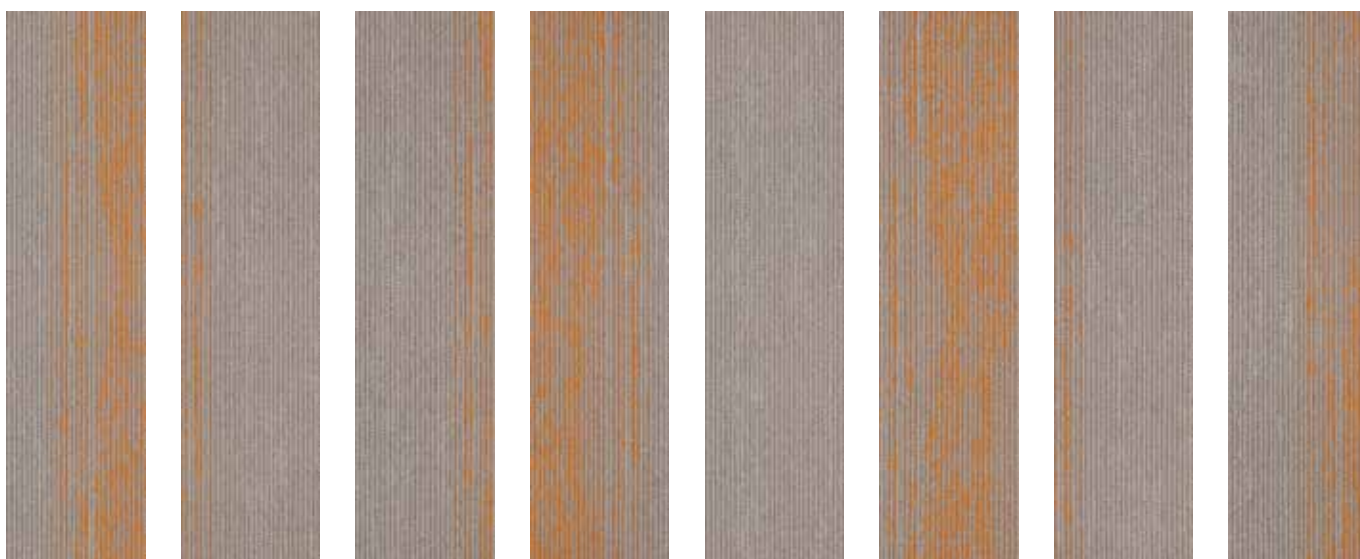
7703 COBALT GREY



7711 DESERT BEIGE



7712 CHROME BEIGE



7713 COPPER BEIGE



Topaz 7 Specifications

Construction	1/12" Multi-Level Loop Pattern
Yarn Composition	100% Solution Dyed Nylon
Pile Weight	ca. 678 g/m ² (20 oz/yd ²) (+/- 10%)
Total Weight	ca. 3670 g/m ² (108 oz/yd ²)
Pile Height	ca. 4 mm (+/- 0.5 mm)
Total Height	ca. 6 mm (+/- 0.5 mm)
Stitch Rate	11 per inch
Backing	ECO Backing with Fibre Glass Layer (PVC-Free Tile)
Plank Size	25 cm x 100 cm
Packing	20 pcs per box (5 m ²)

Performance (as tested by ITTS Inc. USA)

Stain Resistance	9 (AATCC-175-2003)
Static Control	Pass - Max. 4 kV (AATCC 134-1996)
Tuft Bind	Pass - 6.8 lbs (ASTM-D-1335)
Dimensional Stability	Pass - Max. 2% change (AACHEN)
Indoor Air Quality (V.O.C.)	Pass - No VOC Detected (ASTM-D5116-10)
Impact Sound Insulation	ΔLw: 28 dB (ISO 10140)
Sound Absorption	αw = 0,25 (H) (ISO 354) Hz 125 250 500 1000 2000 4000 αs 0.00 0.05 0.30 0.20 0.20 0.25
Flammability	
Radiant Panel	Pass - Class I (ASTM-E-648-06)
Pill Test	Pass - 8 (ASTM-D-2859-96)
Smoke Density	Pass - Max. 450 (ASTM-E-662-06)
Colourfastness	
to light	Excellent - 5 (AATCC-16E)
to wet & dry crocking	Excellent - 5 (AATCC-165)
to ozone	3 (AATCC-129)

Warranties

15 Year Carpet Wear Warranty
Lifetime Anti-shock Carpet Warranty

Ideal for Heavy Commercial Use.

The subfloor should be dry, smooth, flat, dust-free and resistant to compression and load-bearing. The seams may remain visible to the eye and this should be accepted as an inherent characteristic of carpet tiles. Due to dye lot variations, actual colour may vary slightly from the samples. Chair pads are recommended to prevent premature wear of carpet.

Environment

The design and production of Topaz 7 Tile conforms to the ISO 14001:2004 Environmental Management System and complies with environmental regulations.

As a responsible manufacturer and to minimize our carbon footprint, a majority of our excess production materials are recycled in-house resulting in a minimum of 10% recycled content in our tile backing. Topaz 7 Tile does not contain any PVC in its manufactured materials and packaging.

Topaz 7 Tile is an environmentally friendly "green" carpet.

Declare.



Installation Method

