



Design Name:  
**Cologne**  
Design No.: **2129**  
**Smokey Oak**  
Surface Finish:  
**Small Light**  
**Emboss**



Design Name:  
**Cologne**  
Design No.: **2164**  
**Cashew Oak**  
Surface Finish:  
**Small Light**  
**Emboss**



Design Name:  
**Cologne**  
Design No.: **2135**  
**English Oak**  
Surface Finish:  
**Small Light**  
**Emboss**

Bringing Floors to Life...



2129 Smokey Oak

Specifications

Surface Finish	Small Light Emboss or Crystal Finish, Straight Edge
Dimension (L x W x T)	1218mm x 196mm x 8mm
Construction	High Density Fiber Board (HDF)
Wear Layer	58 GSM
Décor Paper	UV Resistant, Level 6
Locking System	Välinge 2G Locking System
Packing (pcs/Box)	8 pcs/Box (1.909sqm)



AC4-32 CLASS

SCRATCH RESISTANT

E1

ISO 9001 14001

German Technology

Inspiration

\*\*\*\*\* OF YOUR BEST

RESIDENTIAL 25 YEARS LIMITED WARRANTY

COMMERCIAL 12 YEARS LIMITED WARRANTY

CE

EN13329-32

Icons representing various tests and certifications: Impact, Stain, Scratch, Fire, etc.

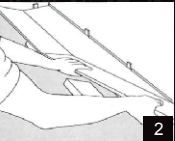
Performance Tests

CHARACTERISTIC	REQUIREMENT	RESULT
Abrasion Resistance	AC4	ABRASION CLASS: AC4-32
Impact Resistance	IC2	IMPACT CLASS
Stain Resistance	5	GRADE 5: No Visible change to surface
Resistance to Cigarette	≥ Grade 4	GRADE 4: Cigarette ember no visible changes to surface
Effect of Furniture Leg	No Damage shall be visible when tested with foot type O	No visible damage according to EN424
Effect of Castor Chair	No change or damage as per EN425	No visible change or damage
Thickness Swelling	≤ 18%	≤ 8%
Light Fastness	Blue Wool Scale, not worse than 6 Grey Scale, not worse than 4	Blue Wool: ≥ 6 Grey Scale: ≥ 4
Porosity	Graphite Test 1	Grade 4-5, No visible effect
Fire Resistance	As per DIN 4102	Ignites with difficulty, BMC B1
Indentation Test	As per DIN 51955	Residual indentation 0.0mm
Susceptibility To Cracks	As per EN 438.2.26	No cracks observable

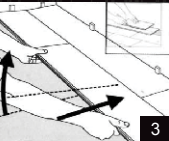
Our patented mechanical locking system makes professional quality installation as easy as;



LIFT  
Insert Plank  
into Channel



LOCK  
Insert Long Edge of  
Second Plank into Channel



DROP  
Press Second Plank  
Forward and Fold Down



Elegance & Comfort in Modern Living

HERITAGE  
FLOORS

Cologne™

Laminate Flooring



Wood



4118 Indian Mahogany



Cologne™  
Laminate Flooring





Design Name:  
**Cologne**  
Design No.: **2640**  
**Sunset Pine**  
Surface Finish:  
**Small Light**  
**Emboss**



Design Name:  
**Cologne**  
Design No.: **4945**  
**Rangoon Teak**  
Surface Finish:  
**Crystal Finish**



Design Name:  
**Cologne**  
Design No.: **4301**  
**Royal Teak**  
Surface Finish:  
**Crystal Finish**



**Cologne**<sup>TM</sup>  
Laminate Flooring

**HERITAGE**<sup>TM</sup>  
FLOORS



Design Name:  
**Cologne**  
Design No.: **4118**  
**Indian Mahagony**  
Surface Finish:  
**Crystal Finish**



Design Name:  
**Cologne**  
Design No.: **4268**  
**Tanzanian Merbau**  
Surface Finish:  
**Crystal Finish**



Design Name:  
**Cologne**  
Design No.: **4299**  
**Brazzaville Wenge**  
Surface Finish:  
**Crystal Finish**

Bringing Floors to Life...



Design Name:  
**Cologne**  
Design No.: **4938**  
**Countryside Walnut**  
Surface Finish:  
**Crystal Finish**



Design Name:  
**Cologne**  
Design No.: **4815**  
**French Walnut**  
Surface Finish:  
**Crystal Finish**



Design Name:  
**Cologne**  
Design No.: **4079**  
**Zebrano Strip**  
Surface Finish:  
**Crystal Finish**