



1141 Tropic Tan



1193



1114



1141



1148



1126



1173

HERITAGE<sup>TM</sup>  
CARPETS

Lucerne

### Specifications

|                    |  |
|--------------------|--|
| Construction       | 1/10" Tufted Cut & Loop Pattern                  |
| Fibre              | 100% Solution Dyed Synthetic Heatset             |
| Pile Weight        | ca. 1150g/m <sup>2</sup> (34 oz/y <sup>2</sup> ) |
| Total Weight       | ca. 2150g/m <sup>2</sup> (63 oz/y <sup>2</sup> ) |
| Pile Height        | ca. 7.5mm (+/-5%)                                |
| Total Height       | ca. 9.5mm (+/-5%)                                |
| Density            | 169850 tufts/sqm                                 |
| Secondary Backing  | ActionBac®                                       |
| Pattern Repeat     | 91.5cm x 91.5 cm                                 |
| Standard Roll Size | 3.66m x 30m                                      |

### Warranties

5-year Carpet Wear Warranty  
Lifetime Antishock Carpet Warranty

Ideal for Residential and Hospitality Use.

The subfloor should be dry, smooth, flat, dust-free and resistant to compression and load-bearing.  
Where seaming is necessary, a seam sealant must be used for all such installations.  
Due to dyelot variations, actual material may vary slightly from the samples.  
Chair pads are recommended to prevent premature wear of carpet.

### Performance (as tested by ITTS Inc. USA)

|                             |  |
|-----------------------------|--|
| Stain Resistance            | 10 (AATCC-175-2003)                                |
| Static Control              | Built-in Permanent                                 |
| Tuft Bind                   | 6.5 lbs (ASTM-D-1335)                              |
| Dimensional Stability       | Max 0.2% change (AACHEN)                           |
| Flammability                |  |
| Radiant Panel               | 0.12 W/cm <sup>2</sup> (ASTM-E-648)                |
| US Federal Flammability Std | Passed (CPSC FF1-70), (16 CFR 1630), (ASTM-D-2859) |
| Smoke Density               | Max 450 (ASTM-E-662-06)                            |
| Colourfastness              |  |
| to light                    | 5 (AATCC-16E)                                      |
| to wet & dry cleaning       | 5 (AATCC-16S)                                      |
| to Ozone                    | 5 (AATCC-129)                                      |



Elegance & Comfort in Modern Living

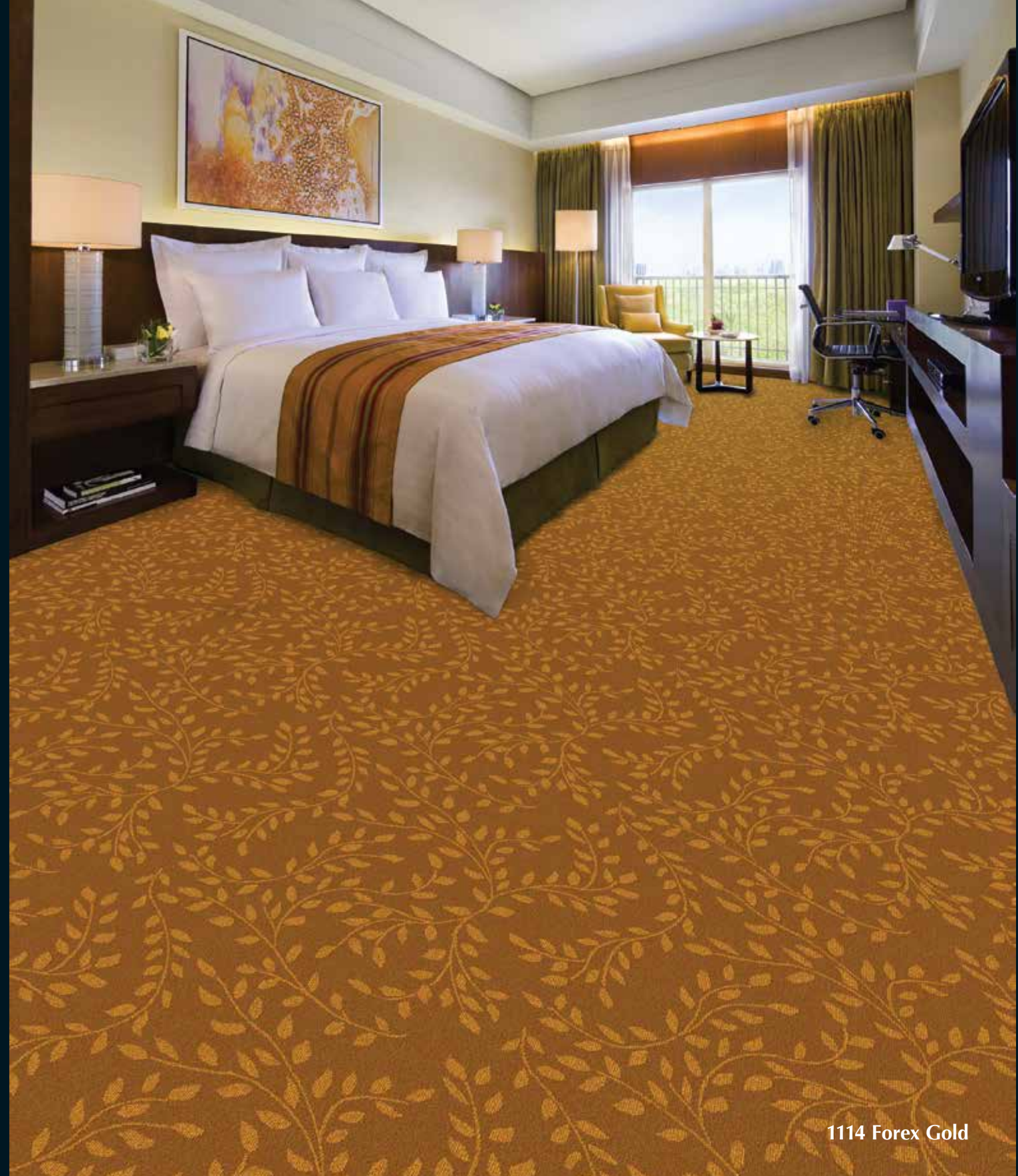
Manufactured in U.A.E.



Cut & Loop



Broadloom



1114 Forex Gold

HERITAGE<sup>TM</sup>  
CARPETS

Lucerne<sup>TM</sup>

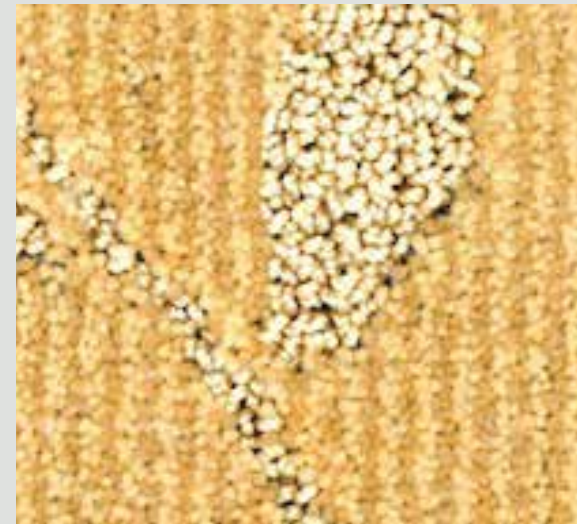
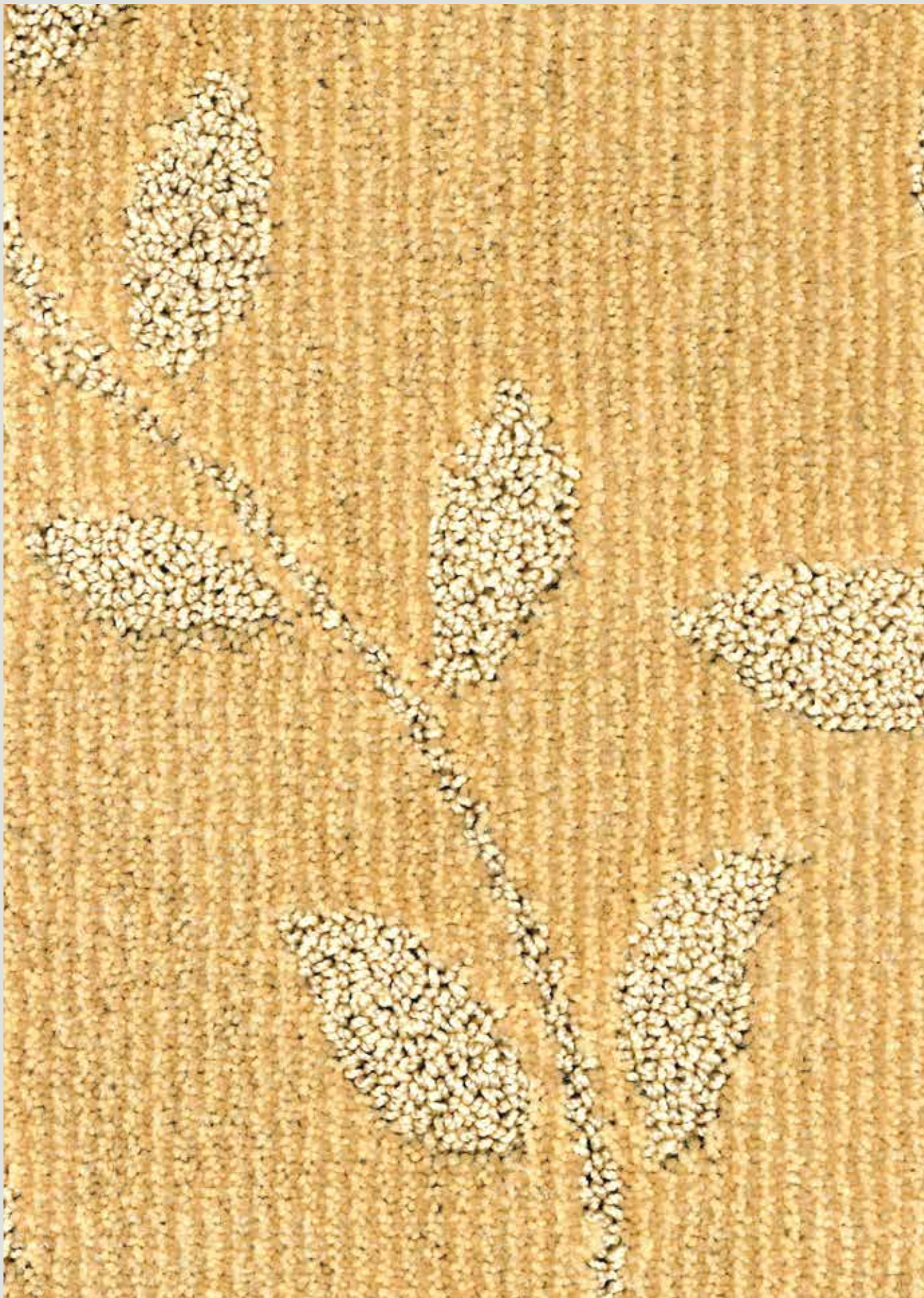




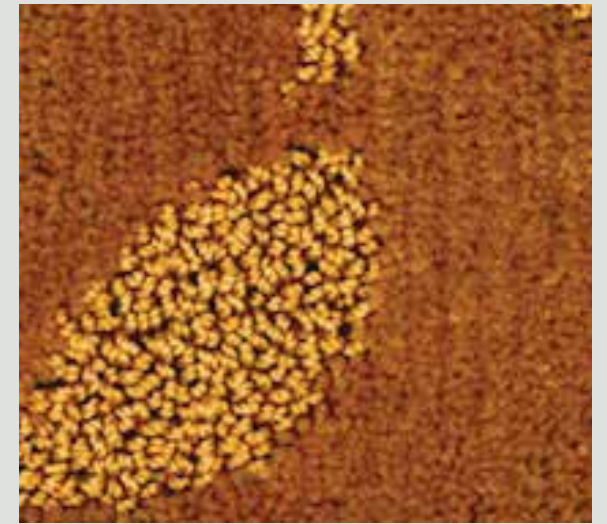


Lucerne

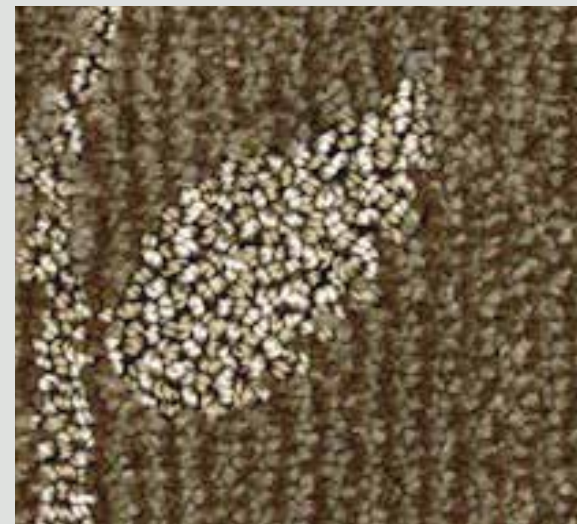
Stain-resistant • Anti-static • Flame-retardant



1193 Loaf Beige



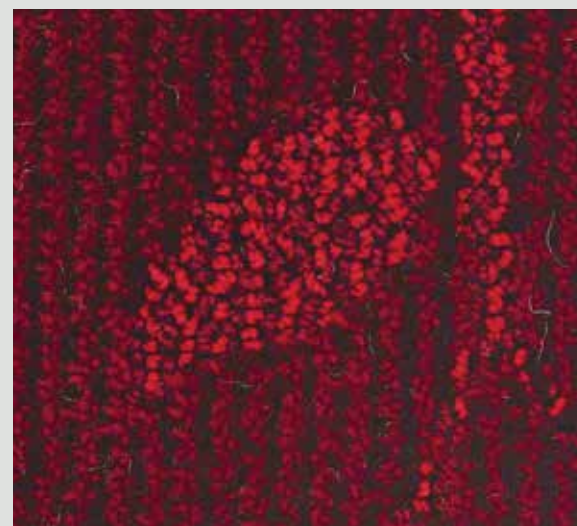
1114 Forex Gold



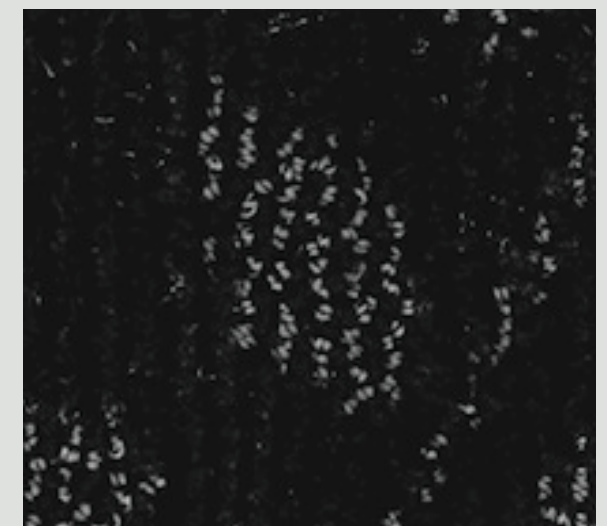
1141 Tropic Tan



1148 Sandy Brown



1126 Vine Red



1173 Aspen Black